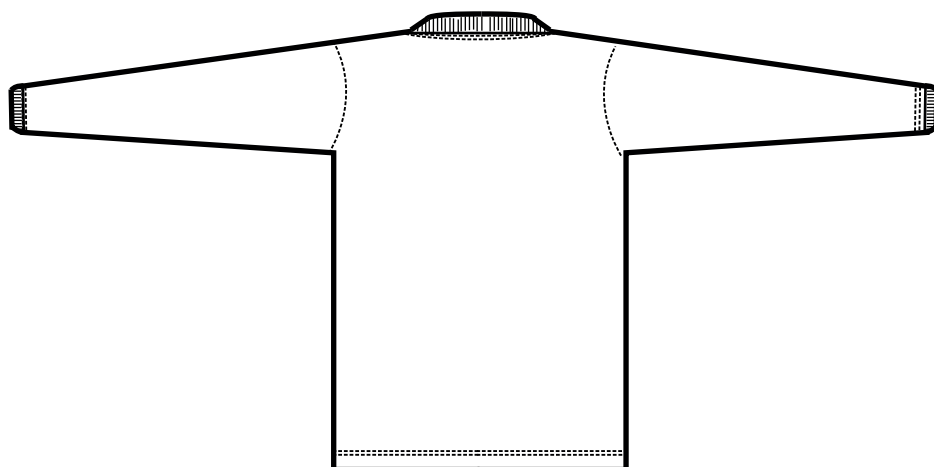
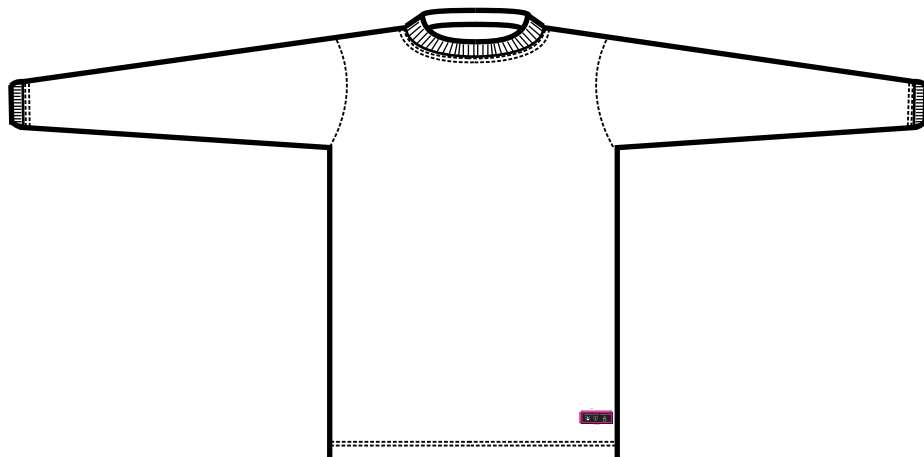


FORCE @work

www.forceatwork.pt

T-Shirt Moon

Ref: OUFWTS02



Piquê, 54% Ma Protex / 44% Cotton / 2% Anti-Static, 200 g / m²

- Inherently FR;
- Rib cuffs ;

Sizes: PT: S-3XL

EN ISO 11612



EN 61482



EN 1149



T-Shirt Moon

Ref: OUFWTS02

European Certifications

- EN ISO 11612:2016 A1 B1 C1 F1;
- EN 61482-2:2009 Classe 1;
- EN 1149-5:2008;
- EN 340:2004;
- EN ISO 13688:2013;

Sizes







		PT - B - ES	S	M	L	XL	2XL	3XL
PEITO	Medidas de peça	Perímetro em cm	98	104	110	116	122	128
		Perímetro em inches	42,5	41	43	45,5	48	50

Colours

- Navy- (Available in stock)

Contrast stitch line colors

-  Yellow-Silver flame resistant reflective tape 50mm
-  Yellow-Silver flame reflective tape is perforated 50mm
-  Silver flame reflective tape 50mm
-  Orange-Silver flame resistant reflective tape 50mm

Washing Instructions



www.forceatwork.pt

Rua dos Balazeiros, 166 e 176

4490 - 232 Argivai | Póvoa de Varzim

Portugal

Tel: +351 252 299 070

E-mail: info@forceatwork.pt

Please note that all information provided in this document is useful and informative and is correct to the best of our knowledge at the time of printing. No liability can be accepted for inaccuracies or omissions. The right is reserved to change this information without prior notice. All our technical files, style descriptions, presentations and drawings, provide the latest update of the patterns and design characteristics or style of each product. However, the delivered products can meet the previous standards, design or style features. Force @ Work is exempt from any liability. Contact our team for complete information if specific requirements are required.